

Utilities 400 product download and installation guide

Version 1.10

April 2011



Table of Contents

Introduction	4
The automatic installer	4
iSeries authority	4
Download UTI product installer	6
Automatic installs	7
RouteOne	7
Download	7
Install	10
ShowMe	14
Download	14
Install	16
PciRoute	18
Download	18
Install	20
Proactive	21
Download	21
Install	23
Query Manager	24
Download	24
Install	26
Manual installs	27
RouteOne	27
Routeone PTFs	29
ShowMe	31
pciRoute	33
ProActive	35

Utilities 400 Product download and installation guide

Query Manager	36
Product installs on the PC	39
RouteOne Client Installation	39
Pc-iRoute Script Generator and File Converter Installation	42

Introduction

All Utilities 400 products are now downloadable from our FTP site. The URL is <ftp.uti400.com> or use IP address 78.129.197.14

The user ID to use is utiguest

The password is Guest400

The automatic installer

We have written an iSeries based install manager product which when installed on your system will manage the downloading and installing of all current and future products on your system. If you can access our FTP site (<ftp.uti400.com>) directly from an iSeries command line it is recommended that you use this methodology. The advantages of this are:-

- 1) It allows the user to select which product and version to work with
- 2) Will only download files that are needed and don't already exist on the system
- 3) Is completely self maintaining, when a new version of the installer is released this can automatically update on your iSeries
- 4) Provides a visual representation of download progress and status

If you can access our FTP site directly from your iSeries it is recommended that you use the automatic installer, otherwise you will have to perform a manual install.

To use the automatic installer please follow the instructions on the next page to download the installer software. To use manual install follow the instructions in the second half of the manual.

iSeries authority

When using the automatic installer it is recommended that you sign on as user profile QSECOFR.

Utilities 400 Product download and installation guide

If this is not possible then ensure the user profile you are using has *SECADM authority otherwise some of the product installations may fail.



Download UTI product installer

Enter the following on an iSeries command line:-

```
FTP '78.129.197.14'
```

Log on as user utiguest, password Guest400

Then enter the follow commands

```
Nam 1
```

```
Bin
```

```
get installer/utiinstall.sav /qsys.lib/qgpl.lib/utiinstall.savf
```

```
Quit
```

```
RSTLIB RT1INSFTP DEV(*SAVF) SAVF(QGPL/UTIINSTALL) RSTLIB(RT1INSTALL)
```

```
DLTF QGPL/UTIINSTALL
```



Automatic installs

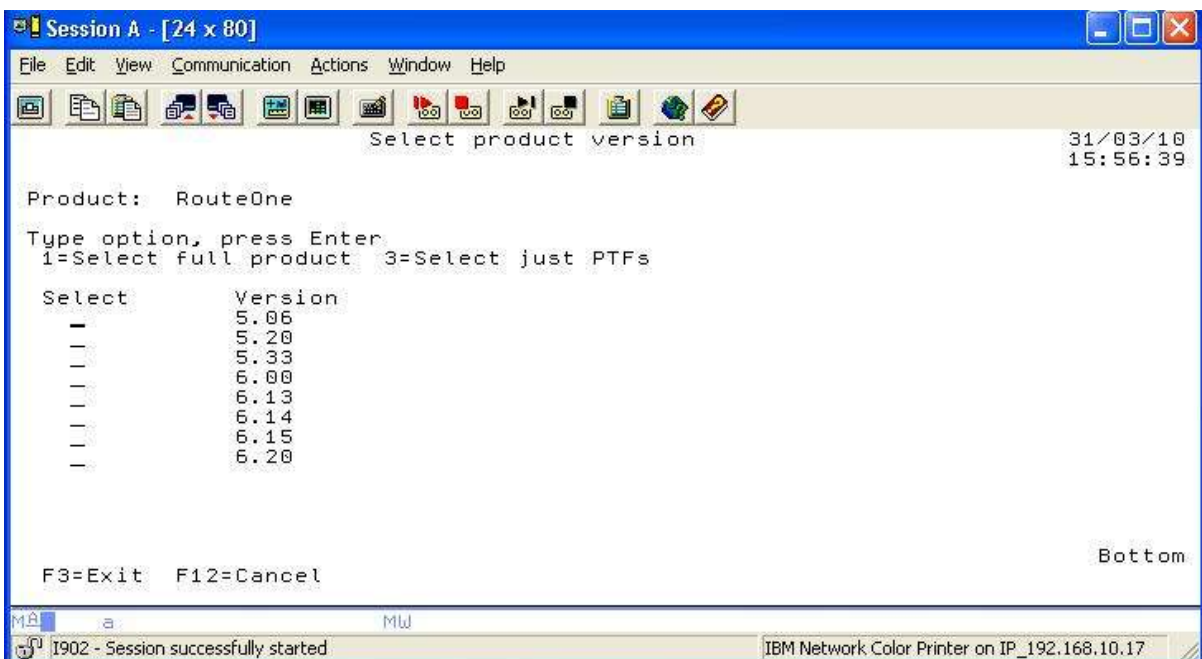
RouteOne

To use the automatic install routines perform the following from a command line on the iSeries.
Note that when performing an installation you must be signed on under a profile that has *SECADM authority and is in the system directory.

Download

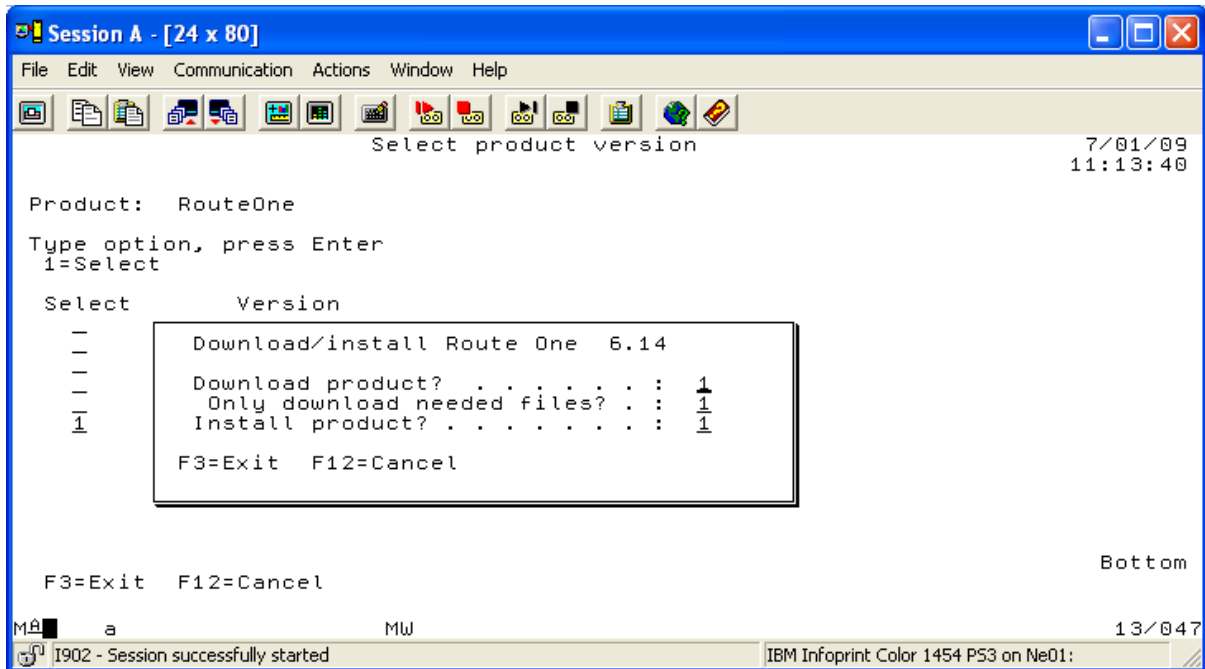
RT1INSTALL/INSTALL

Take option 3 (Download and install RouteOne). You will be presented with a screen to like this.



For a full install, put a 1 next to the version of the product you wish to use and press Enter. To just load PTFs use option 3.

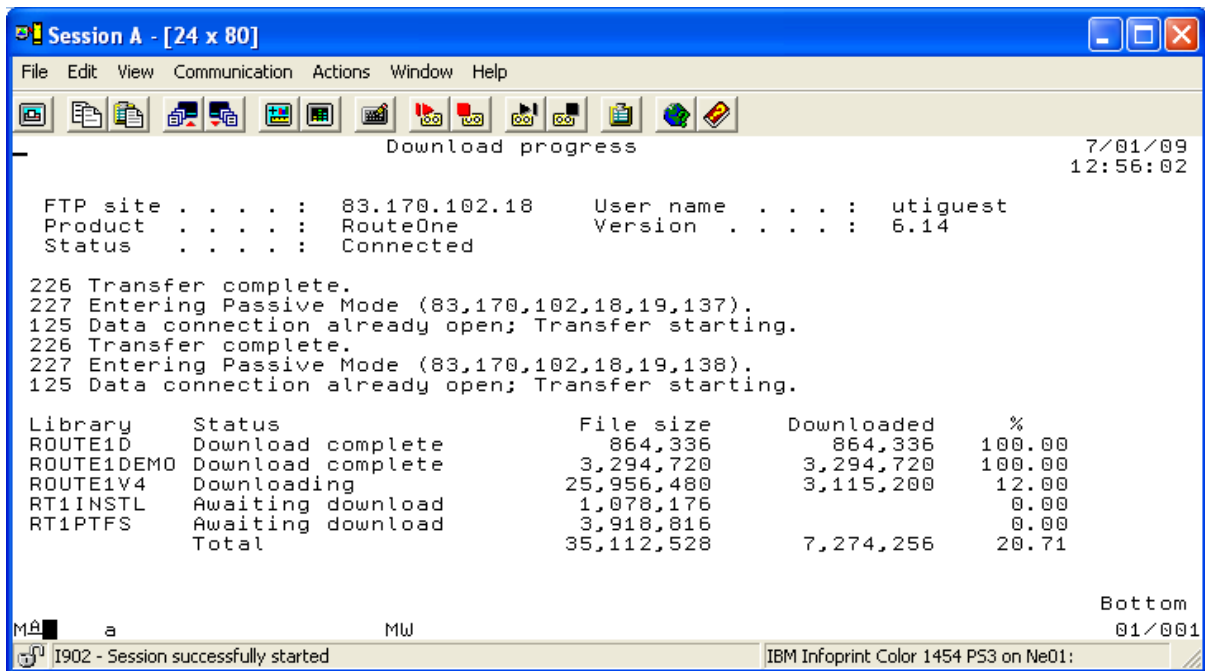
You will now see a screen like this:-



If you wish to download and install the product all in one step leave a 1 in all boxes. If you wish to just download clear the install product box, to install only clear the download product box. It is recommended that you leave the “Only download needed files” box as 1 – this will mean that if you ever download the product to the same iSeries in the future it will only download any files that have changed.

When downloading the product you will see a status screen like below to inform you of the process of the download.

Utilities 400 Product download and installation guide



```
Session A - [24 x 80]
File Edit View Communication Actions Window Help
Download progress 7/01/09 12:56:02
FTP site . . . . . : 83.170.102.18   User name . . . . . : utiguest
Product . . . . . : RouteOne       Version . . . . . : 6.14
Status . . . . . : Connected

226 Transfer complete.
227 Entering Passive Mode (83,170,102,18,19,137).
125 Data connection already open; Transfer starting.
226 Transfer complete.
227 Entering Passive Mode (83,170,102,18,19,138).
125 Data connection already open; Transfer starting.

Library      Status                File size   Downloaded  %
ROUTE1D      Download complete    864,336    864,336    100.00
ROUTE1DEMO   Download complete    3,294,720  3,294,720  100.00
ROUTE1V4     Downloading           25,956,480 3,115,200  12.00
RT1INSTL     Awaiting download    1,078,176  0           0.00
RT1PTFS      Awaiting download    3,918,816  0           0.00
Total                               35,112,528 7,274,256  20.71

Bottom
MA a Mw 01/001
I902 - Session successfully started IBM Infoprint Color 1454 P53 on Ne01:
```

If you have opted to install the product after downloading the normal RouteOne installation will be executed as follows.

Install

This routine can be used for both a new installation and upgrading a current installation. When upgrading please bear in mind the following:-

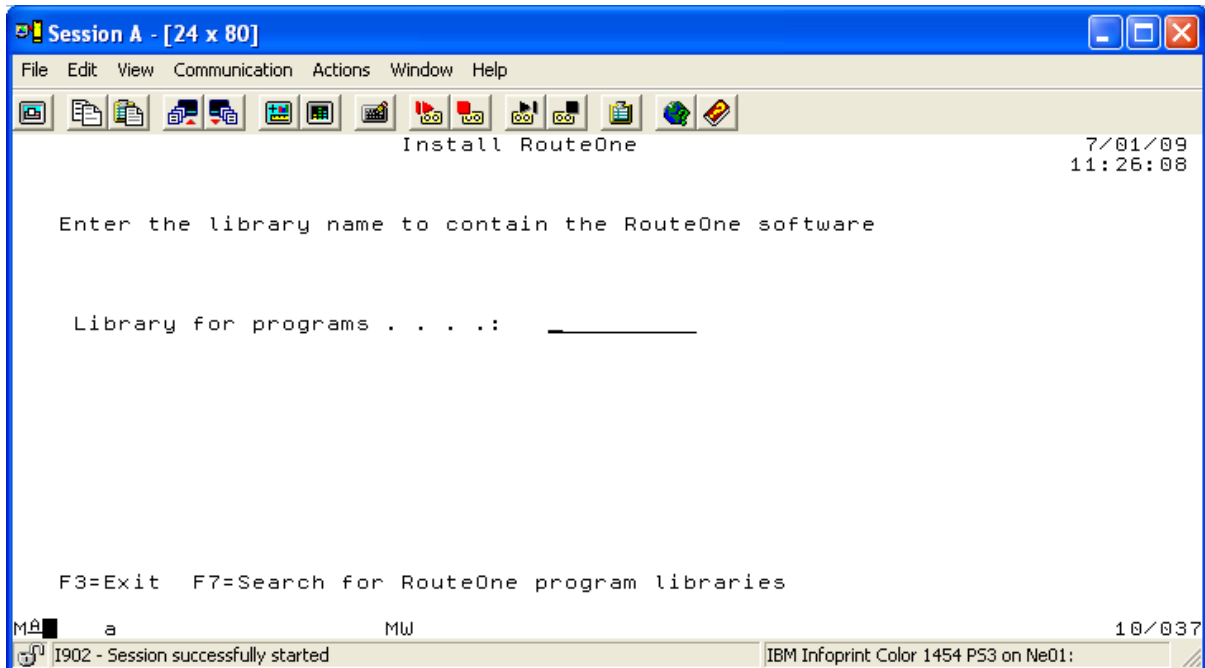
- 1) Please ensure RouteOne is not in use when upgrading. It is important to exit the RouteOne menu.

- 2) If using the automatic spool file processing ensure this is deactivated. Take option 12 from the RouteOne menu and if active take F16 to deactivate.

- 3) It is recommended that you take a copy of the RouteOne libraries prior to upgrading if you do not already have a backup.

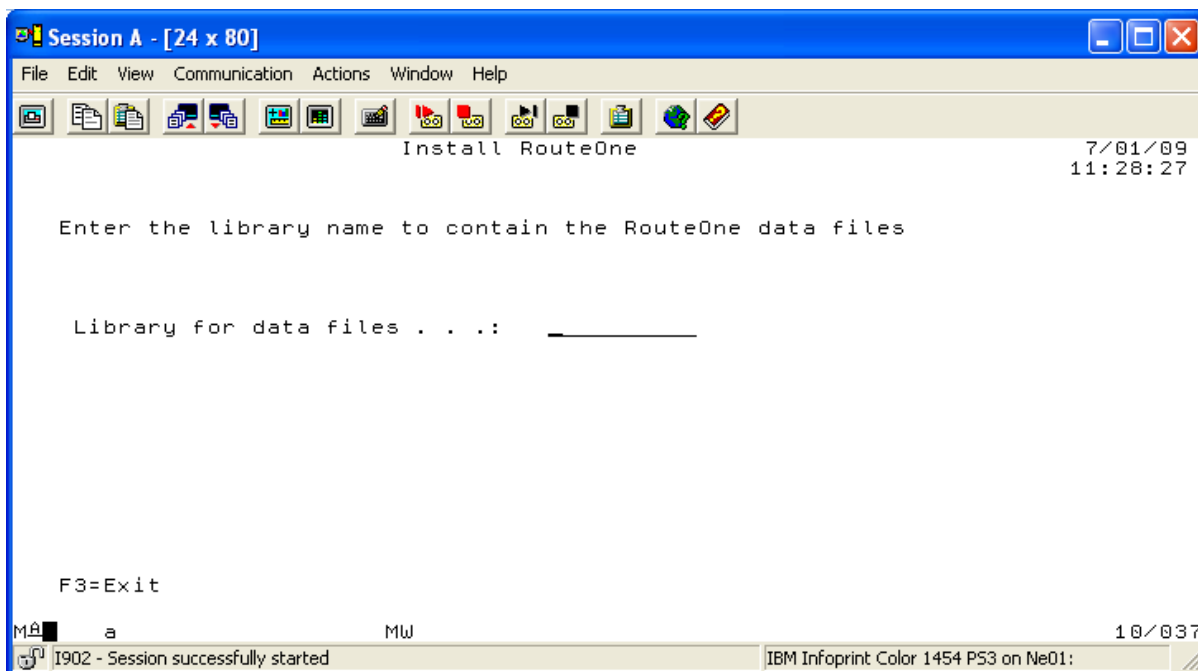
- 4) If you followed the installation recommendations ROUTE1 will be the program library and ROUTE1DATA the data library. You may also have additional data libraries and also program libraries.

- 5) All RouteOne iSeries configuration settings, definitions and FTP requests will be retained.



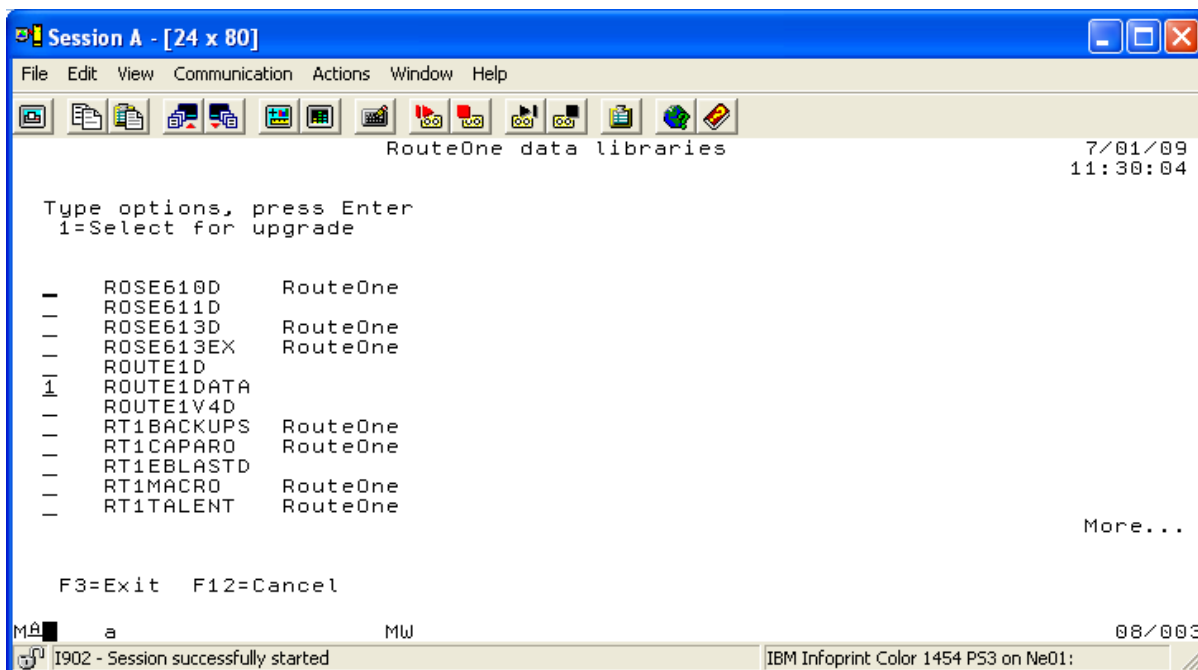
For a new installation enter the name of the new library to contain the RouteOne programs, the recommended name is Route1. This library must not already exist. To upgrade an existing installation enter the name of the current RouteOne programs library – you will then have to press F9 to confirm the upgrade.

For a new installation you will then be presented with the following screen:-



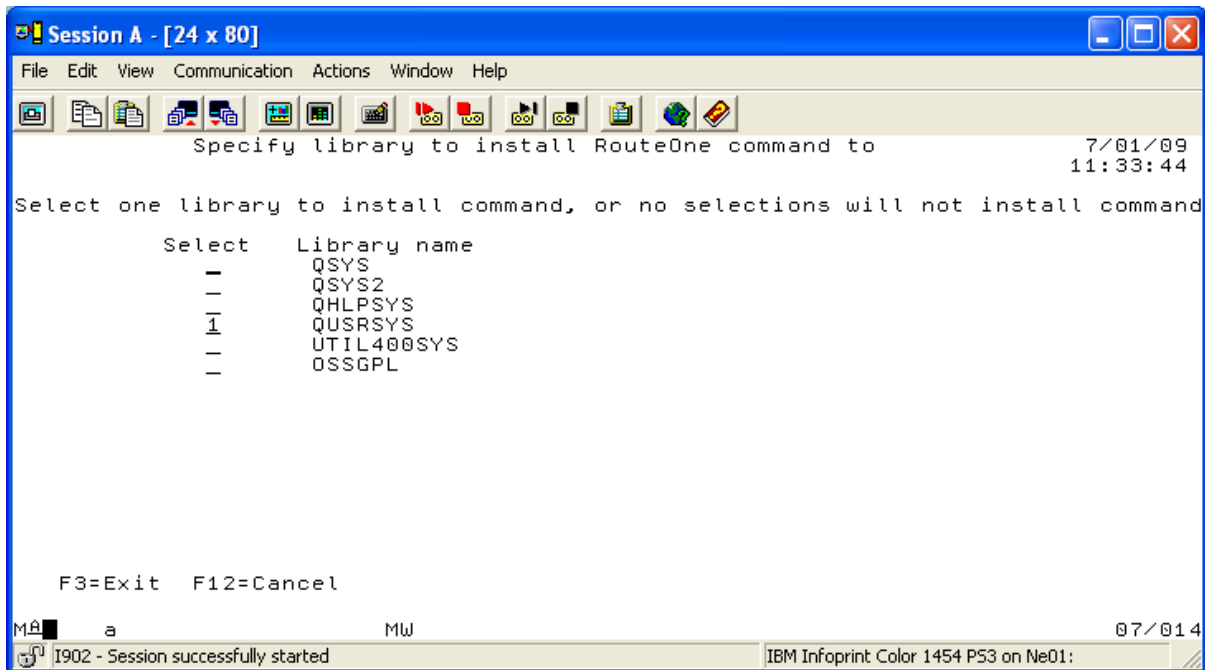
Enter the name you wish to give to the RouteOne data library, the recommended name is ROUTE1DATA.

If you are upgrading you will be presented with a list of existing RouteOne data libraries. Each library that is associated with the programs library being upgraded will have a 1 next to it. You may, if you wish, specify other data libraries to be upgraded.



Utilities 400 Product download and installation guide

After the product is installed you will be presented with a screen like the one below.



Here you can optionally put the RouteOne commands into a library in the system library for ease of use. If you do this you can then enter the product with the command ROUTEONE, otherwise you will have to enter the command data-library/ROUTEONE eg ROUTE1DATA/ROUTEONE.

When the installation is complete you will be returned to the UTI400 product installer menu.

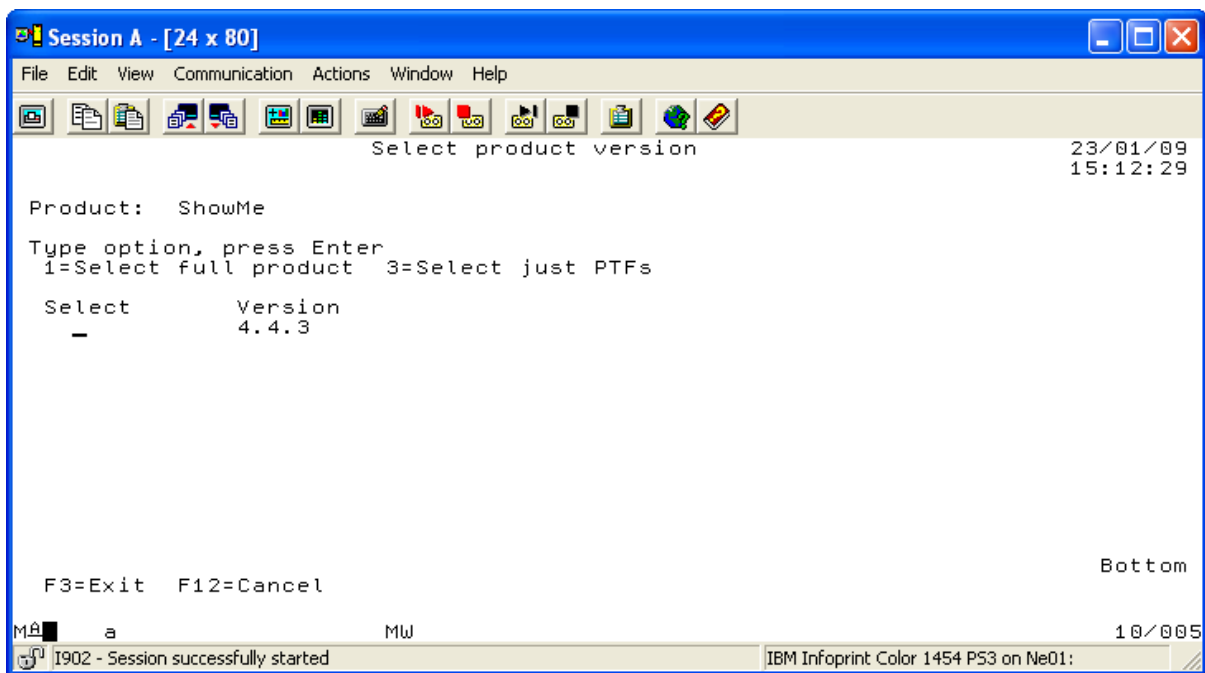
Versions of RouteOne client can be downloaded from the FTP site from folder RouteOne/ClientReleases – see the section at the end of this document for installation instructions.



ShowMe

Download

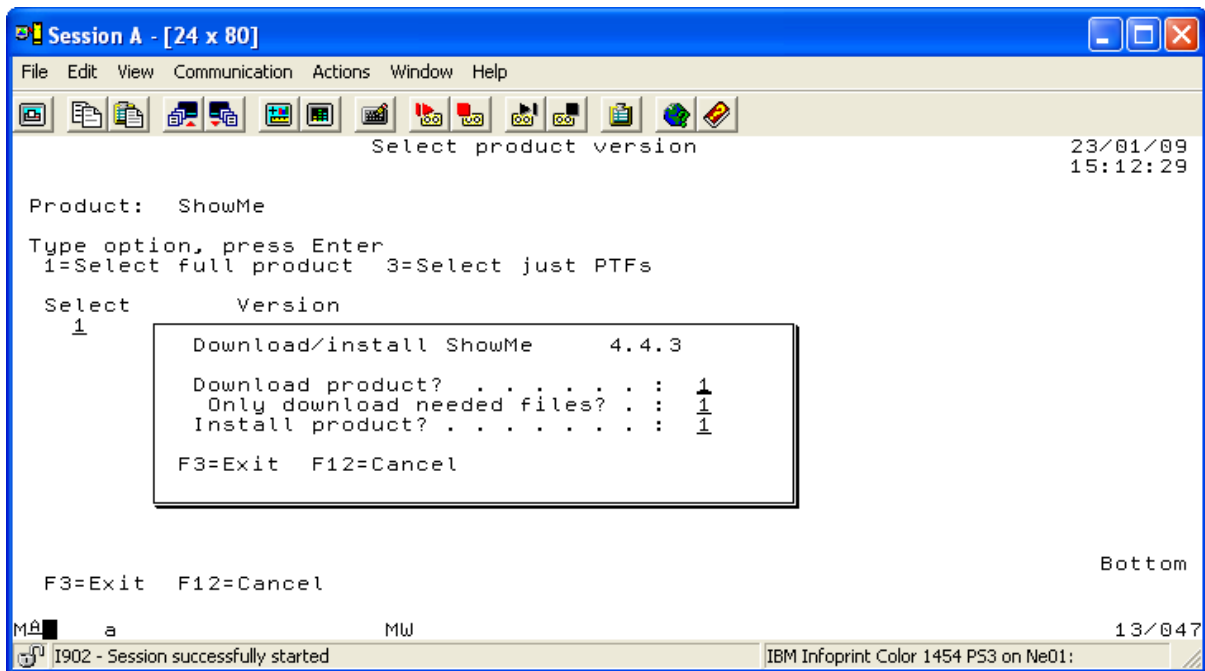
Take option 5 from the installer menu. You will be presented with a screen looking like this:-



For a new ShowMe install select option 1 against the version to download. To install the latest PTF package select option 3.

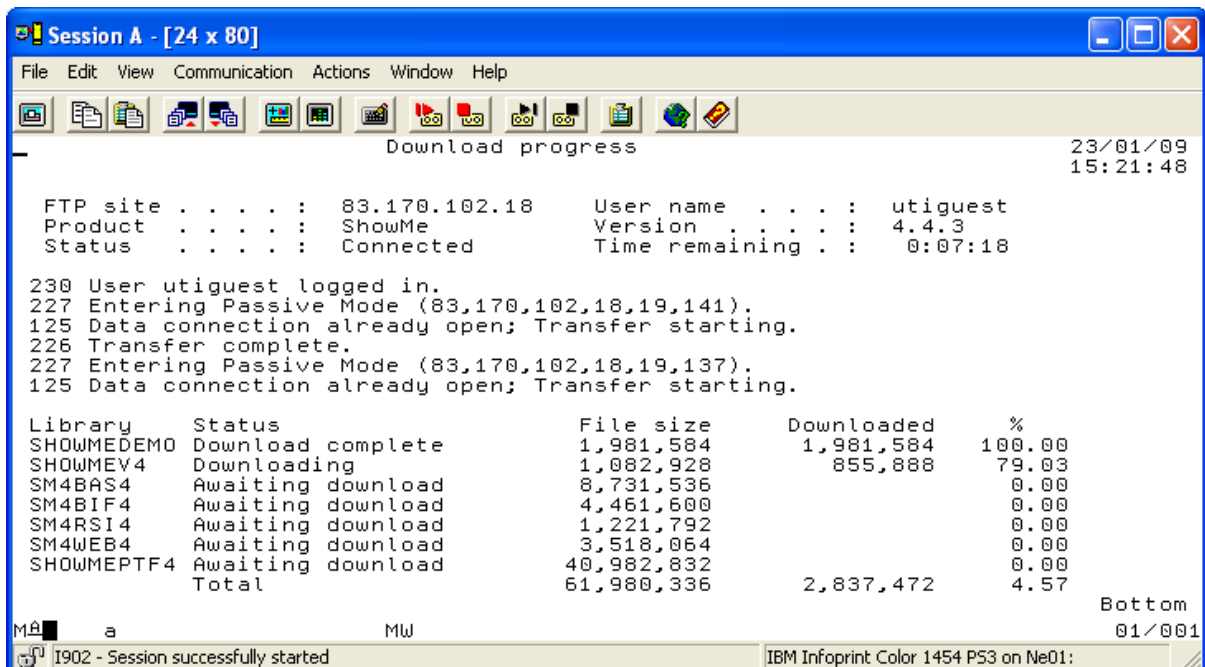
After selecting the required option you will then see the following screen:-

Utilities 400 Product download and installation guide



It is recommended that you just press enter here.

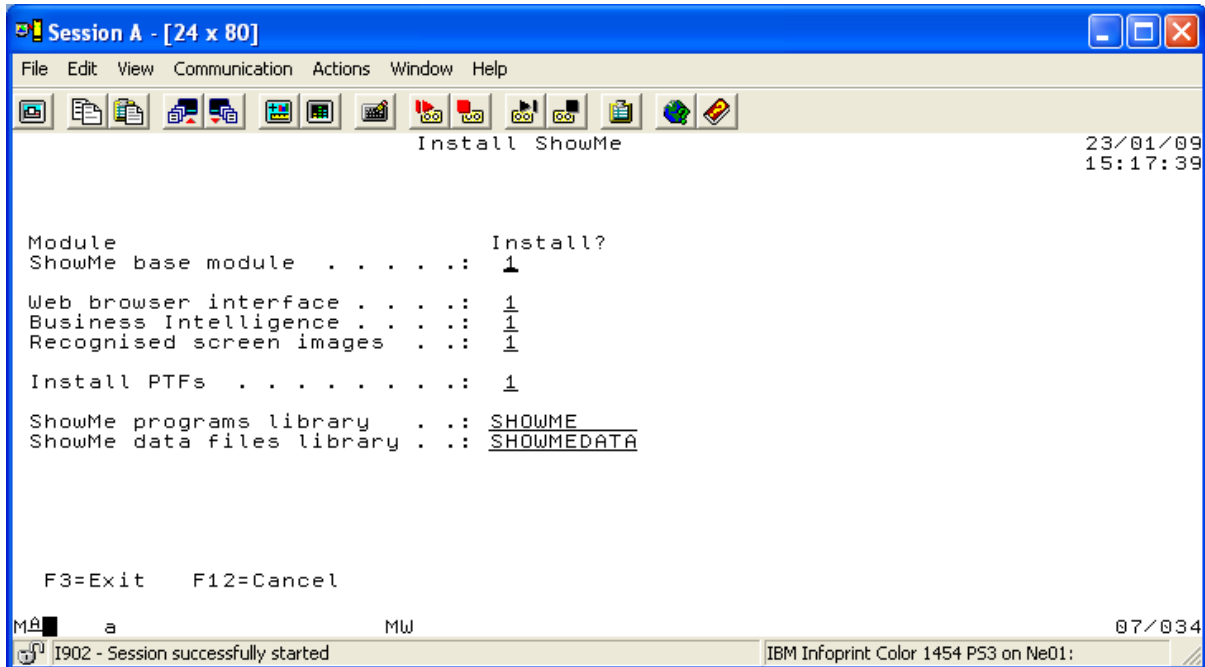
You will then be presented with the download status screen as below:-



When the download is complete press Enter.

Install

For a new install the following screen will appear:-

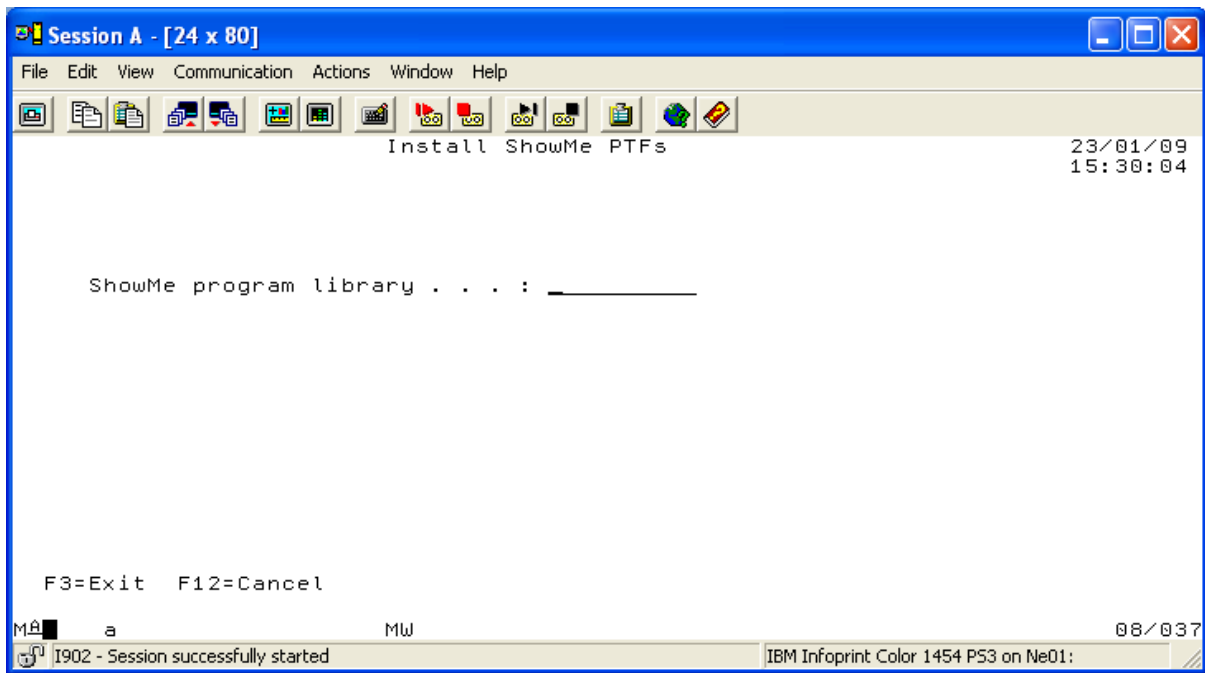


Leave 1s against the options you wish to install. If required, change the names of the ShowMe programs and data files library and press Enter. Status messages will be displayed informing you of the progress of the installation. When the installation is complete enter the command SHOWMEDATA/SHOWME – if you installed to a different data library name modify this command as required. You will need to contact Utilities 400 to obtain authorisation codes for the product. Please send your name, company name, system serial number and model to support@uti400.com. We will respond with the authorisation codes and instructions of how to install the web module.

To use the product enter the command data library name/SHOWME.

If you are just installing PTFs, after the download you will see this screen:-

Utilities 400 Product download and installation guide



Enter the name of the ShowMe programs library and press Enter.

You should receive a message saying that PTFs have been installed successfully.



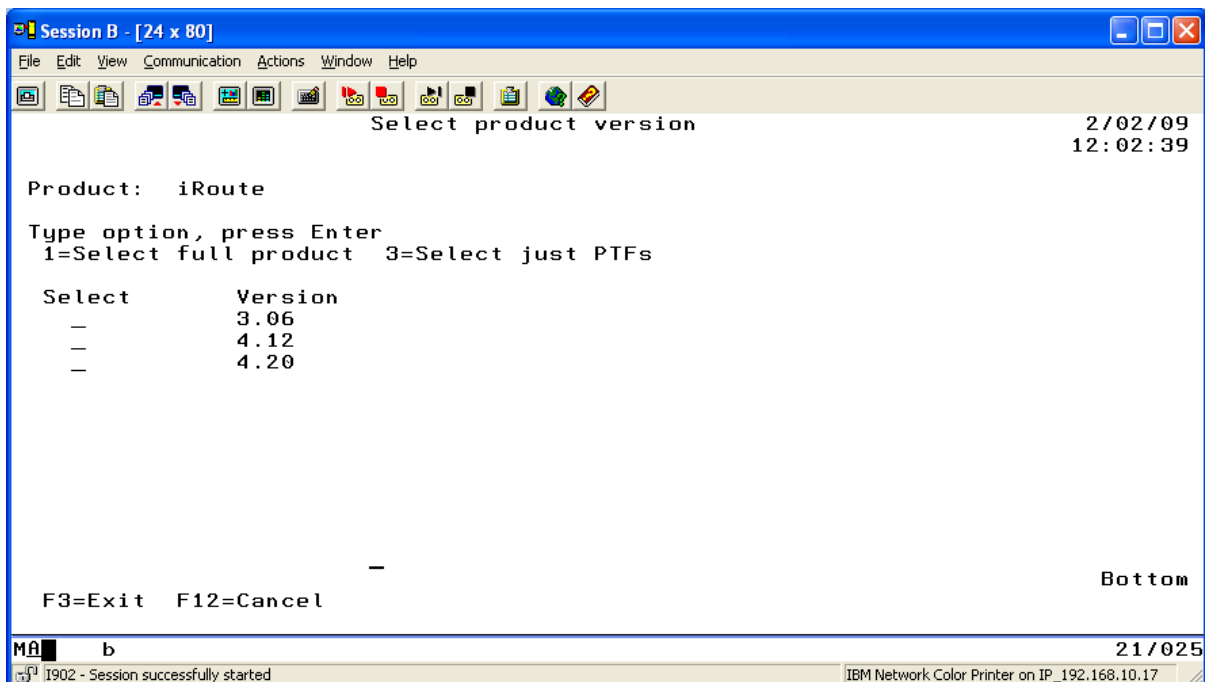
PciRoute

To use the automatic install routines perform the following from a command line on the iSeries.
Note that when performing an installation you must be signed on under a profile that has *SECADM authority and is in the system directory.

Download

RT1INSTALL/INSTALL

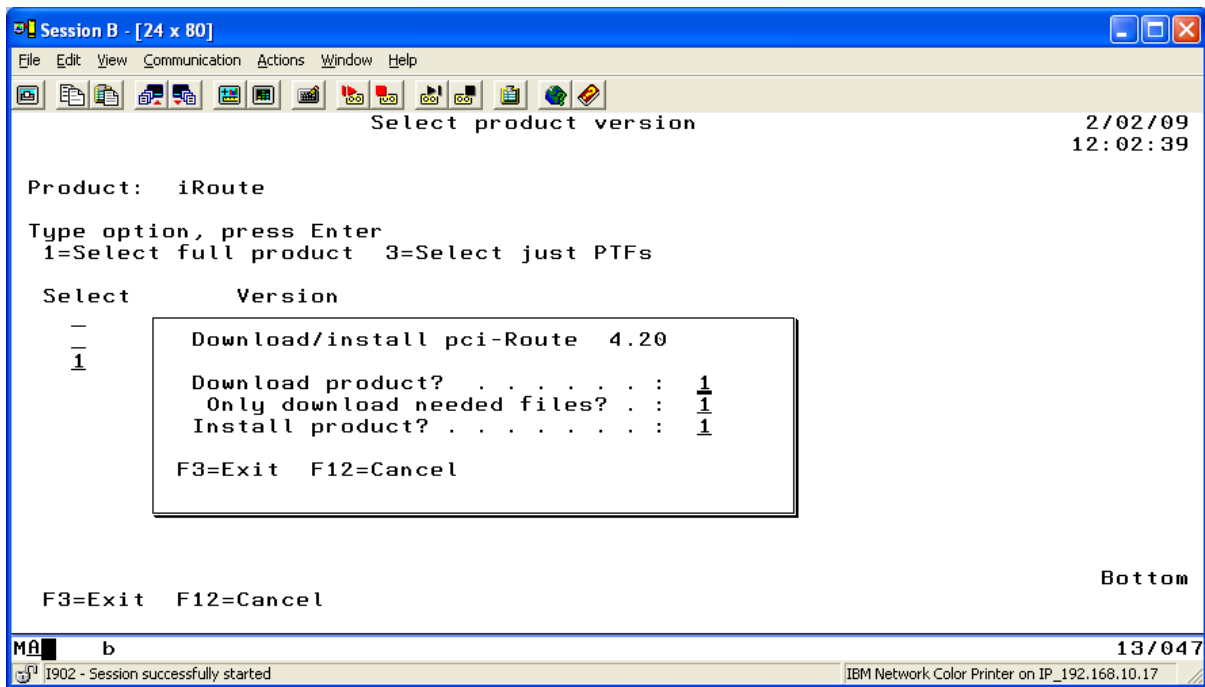
Take option 4 from the installer menu. You will be presented with a screen looking like this:-



For a new PciRoute install or to upgrade to a new release select option 1 against the required version. To install the latest PTF package select option 3.

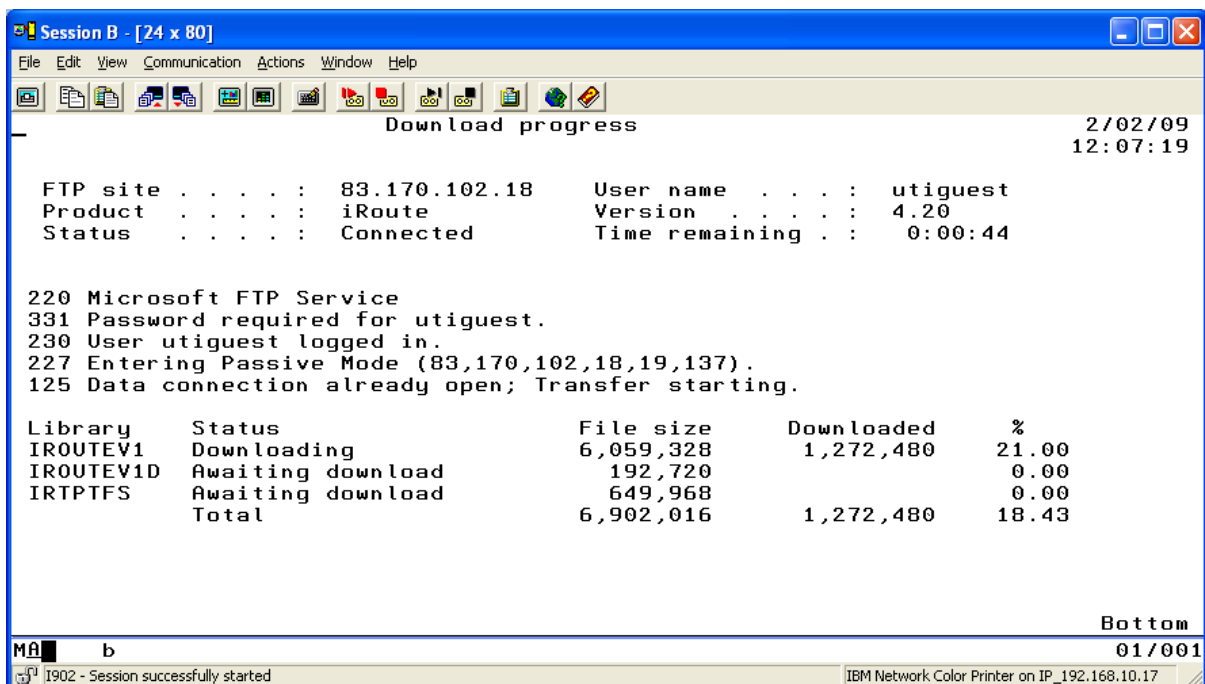
After selecting the required option you will then see the following screen:-

Utilities 400 Product download and installation guide



It is recommended that you just press enter here.

You will then be presented with the download status screen as below:-



When the download is complete, you will be prompted to press Enter to continue.

Install

There are no data entry panels for pciRoute.

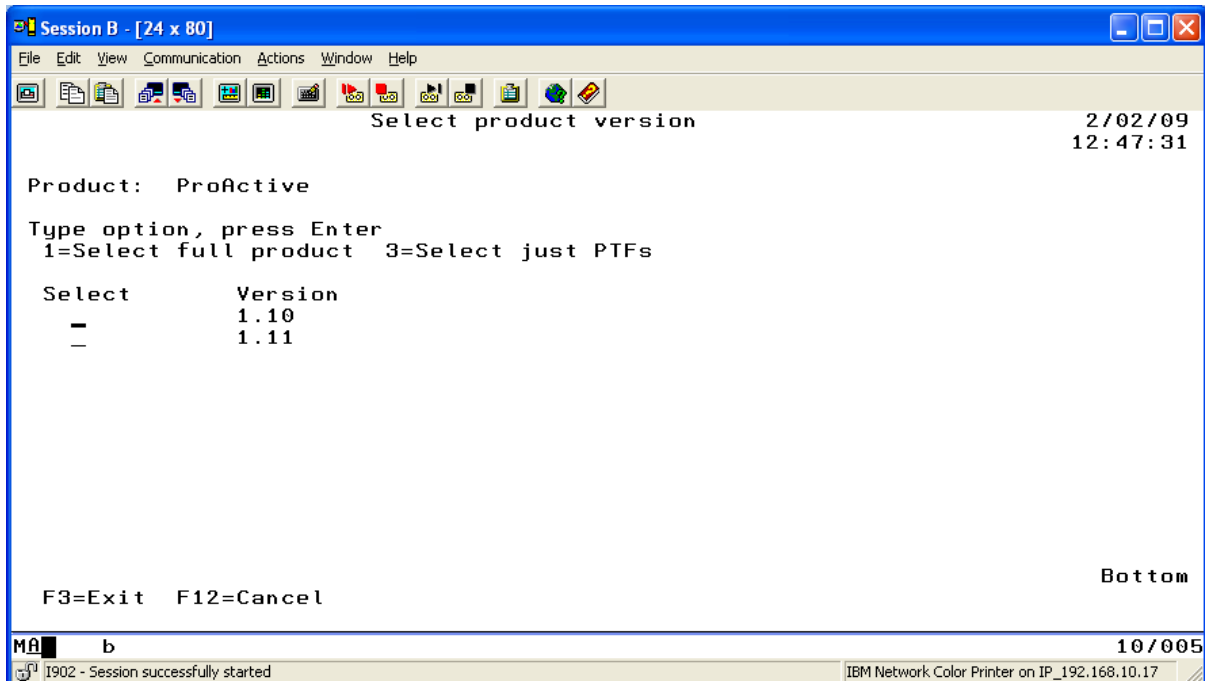
You will though see status messages informing you of the progress of the install.

When the install is complete enter IROUTEDATA/IROUTE to run the product.

Proactive

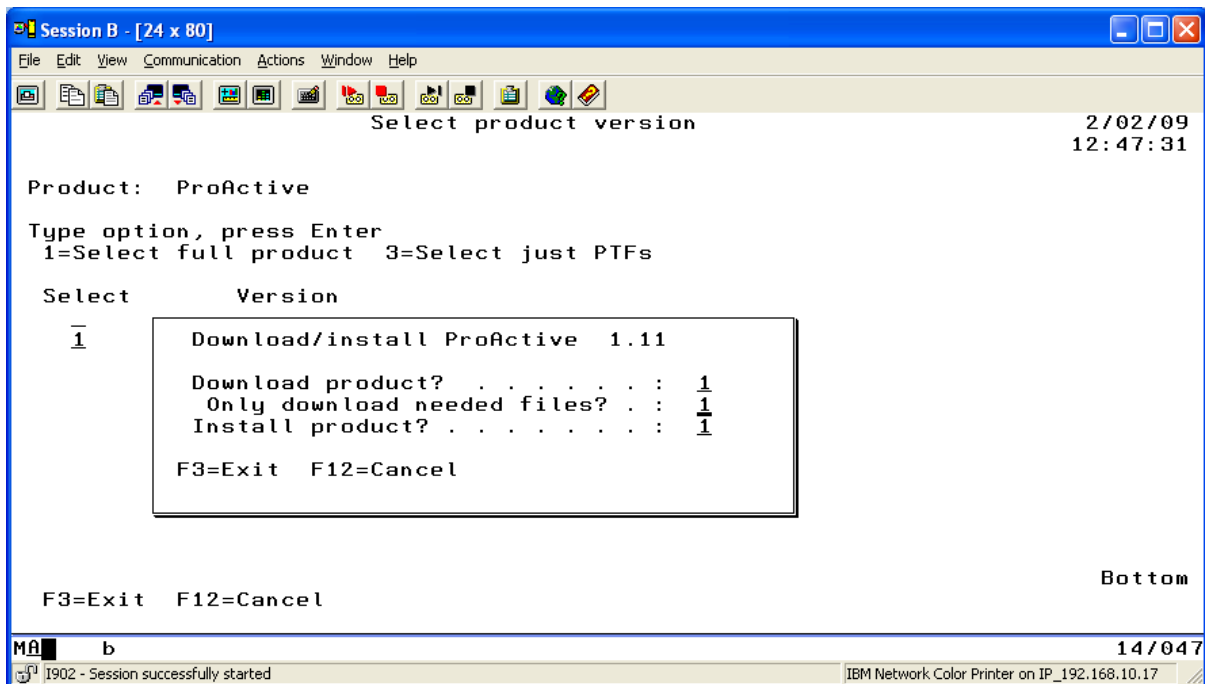
Download

Take option 6 from the installer menu. You will be presented with a panel like this:-



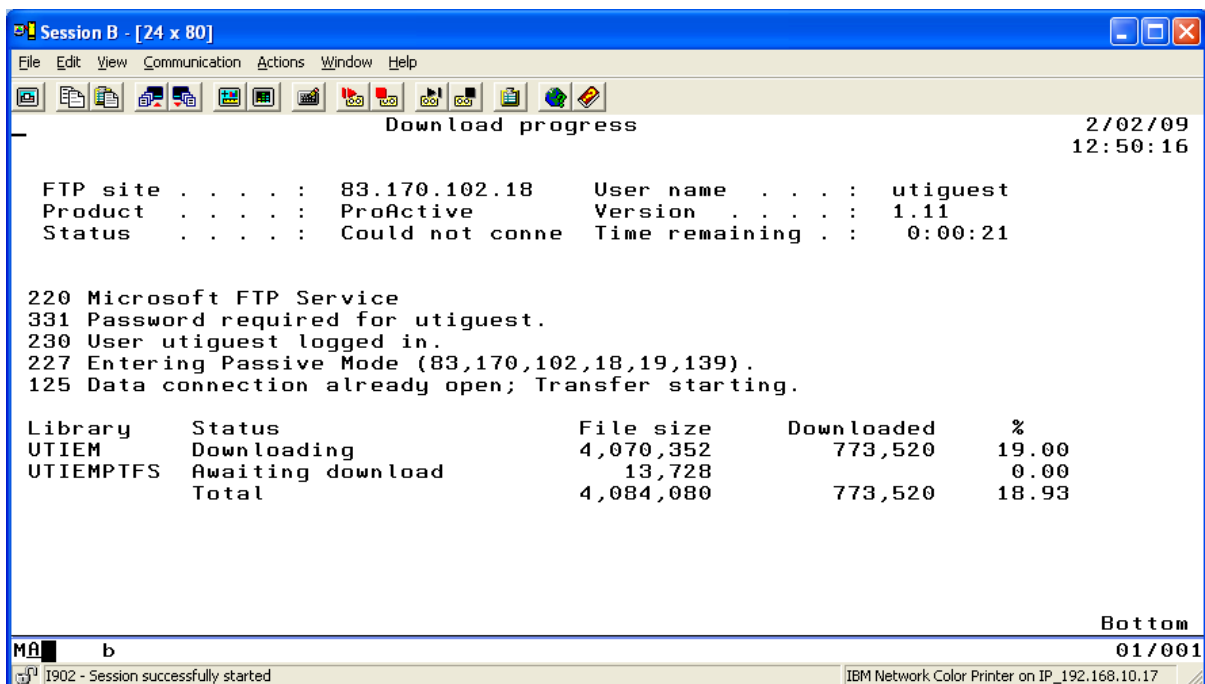
Enter a 1 for a new install or upgrade of Proactive. Enter a 3 just to install the PTFs. After pressing enter you will be presented with a panel like this:-

Utilities 400 Product download and installation guide



It is recommended that you just press Enter to continue.

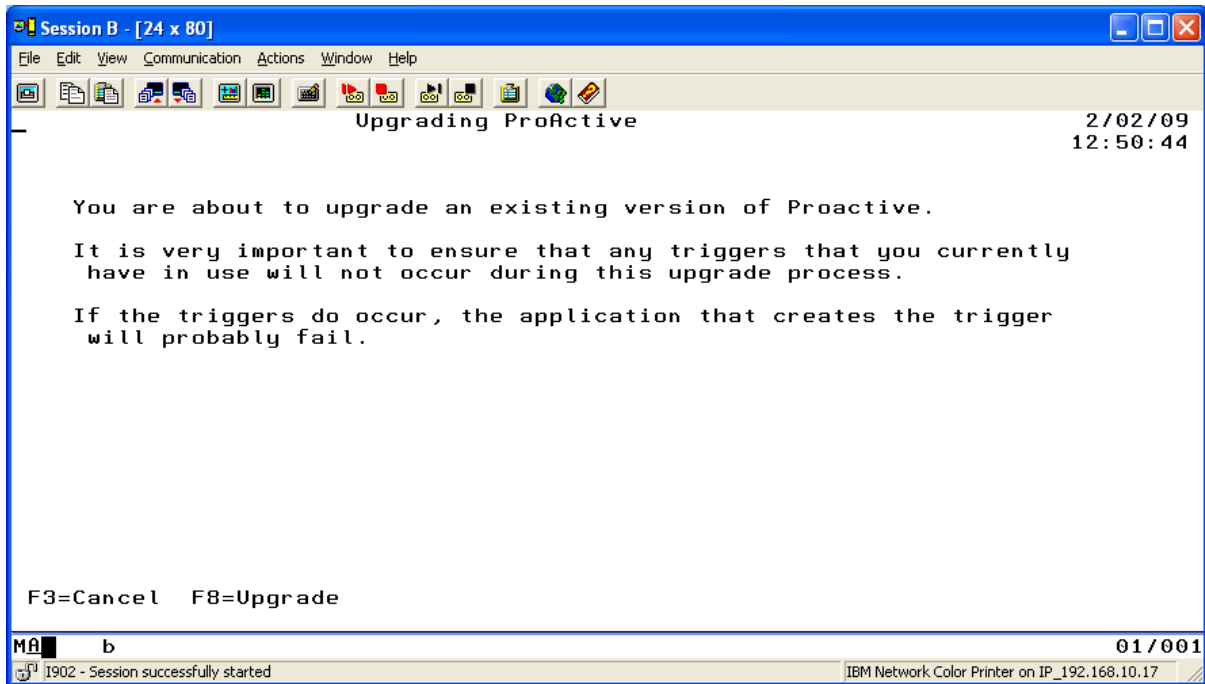
You will then see a download status screen similar to this:-



Install

When the download is complete the installer checks to see if Proactive is already installed on this system. If it is an upgrade will be performed, otherwise a new install will take place.

For an upgrade the following warning screen will be displayed:-



This is to inform you that if any ProActive triggers occur during the upgrade process you will probably receive error messages in your applications as the trigger routines will be unavailable during the upgrade process. It is important to ensure that the upgrade is performed at a time when triggers will not be generated.

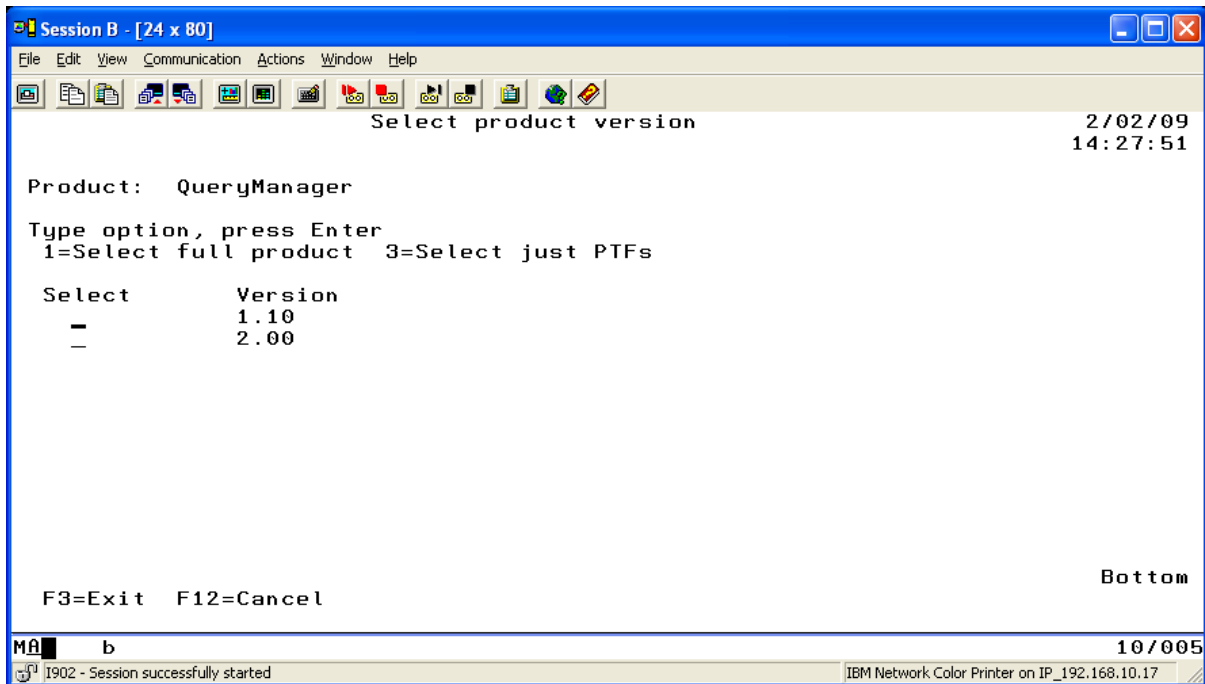
No further panels are displayed during the installation, although status messages will be displayed informing you of the progress of the install.

When the install is complete enter the command UTIEM/UTIPA to enter the product.

Query Manager

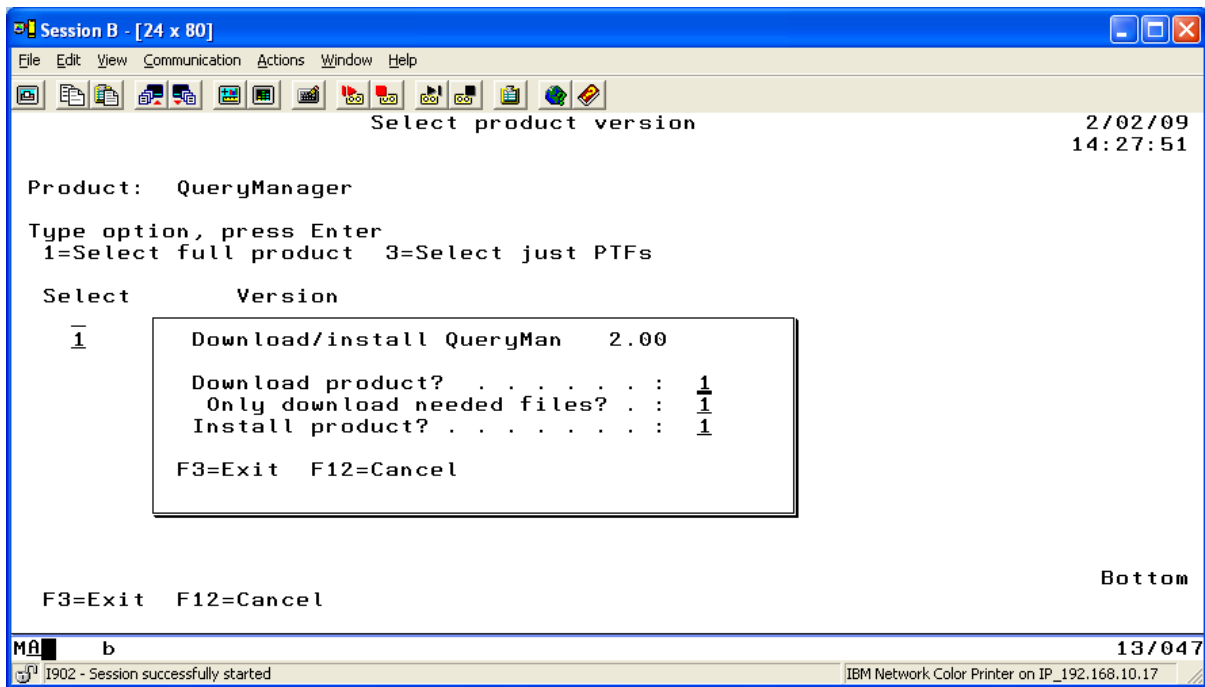
Download

Take option 8 from the installer menu. You will be presented with a panel like this:-

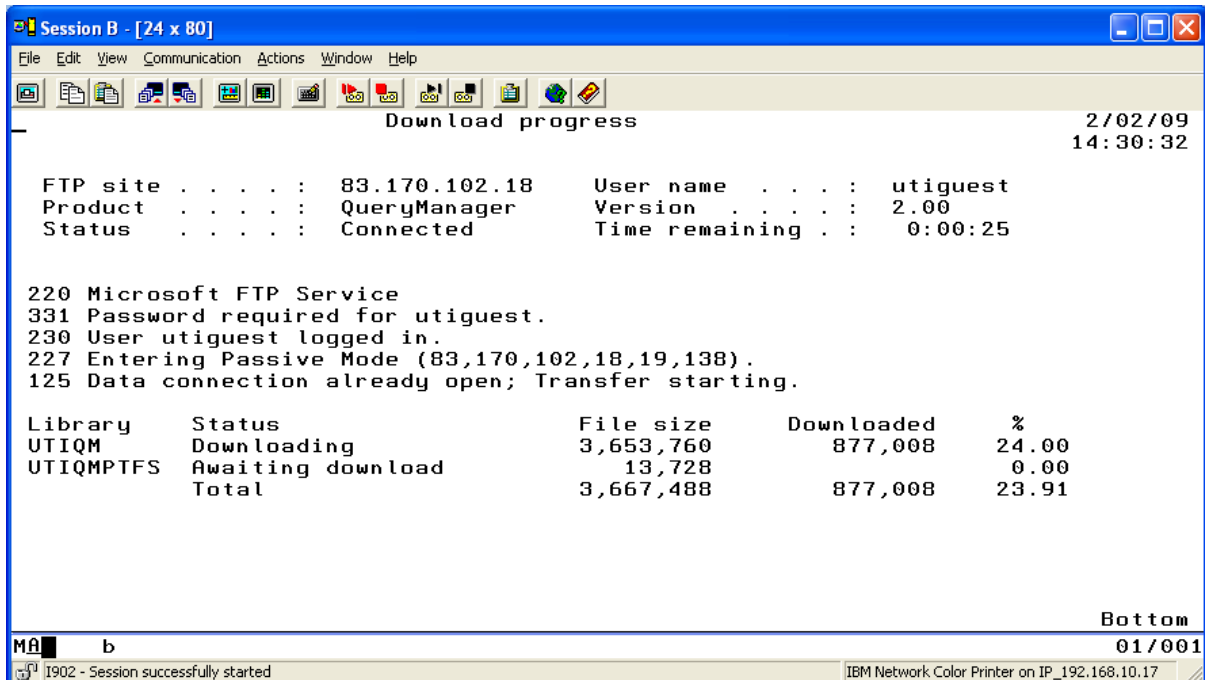


Enter a 1 for a new install or upgrade of Query Manager. Enter a 3 just to install the PTFs. After pressing enter you will be presented with a panel like this:-

Utilities 400 Product download and installation guide



It is recommended that you just press Enter on this screen. You will then see the download status screen, similar to the one below.



When the download is completed press Enter.

Install

No further panels are displayed during the installation, although status messages will be displayed informing you of the progress of the install.

The Query Manager product will perform an upgrade if the library already exists or a new install if no library is found on the system.

Manual installs

RouteOne

To install the product manually perform the following:-

Key the following on an iSeries command line:- (If you have previously download any Utilities 400 products you may get error messages saying that the library or file already exists. Just ignore these messages)

```
CRTLIB RT1INSTALL
```

```
CRTSAVF RT1INSTALL/R1DEMO
```

```
CRTSAVF RT1INSTALL/ROUTE1D
```

```
CRTSAVF RT1INSTALL/ROUTE1V4
```

```
CRTSAVF RT1INSTALL/RT1INSTL
```

```
CRTSAVF RT1INSTALL/RT1PTFS
```

On a PC:-

Create a folder on your c:\ drive and call it UTIINSTALL

Open up the command prompt and enter FTP www.uti400.com

Enter user name utiguest when prompted

Enter password Guest400 when prompted

```
BIN
```

```
CD RouteOne/releases
```

```
DIR
```

This will show you a list of the available releases on the FTP site eg 6.14

Enter CD followed by the release you wish to download eg CD 6.14

```
LCD C:\UTIINSTALL
```

Utilities 400 Product download and installation guide

```
GET R1DEMO.SAV R1DEMO
```

```
GET ROUTE1D.SAV ROUTE1D
```

```
GET ROUTE1V4.SAV ROUTE1V4
```

```
GET RT1INSTL.SAV RT1INSTL
```

```
GET RT1PTFS.SAV RT1PTFS
```

```
QUIT
```

Now we will FTP these files to the save files we previously created on the iSeries. To do this in the PC command prompt enter the following

```
FTP nnn.nnn.nnn.nnn (Replace nnn.nnn.nnn.nnn with the IP address of your iSeries)
```

Log on with a valid iSeries user and password

```
BIN
```

```
LCD C:\UTIINSTALL
```

```
CD RT1INSTALL
```

```
PUT R1DEMO R1DEMO
```

```
PUT ROUTE1D ROUTE1D
```

```
PUT ROUTE1V4 ROUTE1V4
```

```
PUT RT1INSTL RT1INSTL
```

```
PUT RT1PTFS RT1PTFS
```

```
QUIT
```

Back on the iSeries:

Ensure you are signed on as QSECOFR or with a profile that has *SECADM rights and is enrolled in the system directory.

```
RSTOBJ QINSTAPP SAVLIB(RT1INSTL) DEV(*SAVF) SAVF(RT1INSTALL/RT1INSTL) RSTLIB(RT1INSTALL)
```

```
ADDLIB RT1INSTALL
```

```
CALL RT1INSTALL/QINSTAPP '*SAVF' (Note *SAVF must be in upper case)
```

Follow the instructions in the section Install of the RouteOne automatic download routine.

Routeone PTFs Only

Prerequisite: **Download UTI product installer** (see page 6).

To install the product ptfs manually perform the following:-

Key the following on an iSeries command line:- (If you have previously download any Utilities 400 products you may get error messages saying that the library or file already exists. Just ignore these messages)

```
CRTLIB RT1INSTALL
```

```
CRTSAVF RT1INSTALL/RT1INSTL
```

```
CRTSAVF RT1INSTALL/RT1PTFS
```

On a PC:-

Create a folder on your c:\ drive and call it UTIINSTALL

Open up the command prompt and enter FTP www.uti400.com

Enter user name utiguest when prompted

Enter password Guest400 when prompted

```
BIN
```

```
CD RouteOne/releases
```

```
DIR
```

This will show you a list of the available releases on the FTP site eg 6.14

Enter CD followed by the release you wish to download eg CD 6.14

```
LCD C:\UTIINSTALL
```

```
GET RT1INSTL.SAV RT1INSTL
```

```
GET RT1PTFS.SAV RT1PTFS
```

QUIT

Now we will FTP these files to the save files we previously created on the iSeries. To do this in the PC command prompt enter the following

FTP nnn.nnn.nnn.nnn (Replace nnn.nnn.nnn.nnn with the IP address of your iSeries)

Log on with a valid iSeries user and password

BIN

LCD C:\UTIINSTALL

CD RT1INSTALL

PUT RT1INSL RT1INSL

PUT RT1PTFS RT1PTFS

QUIT

Back on the iSeries:

Ensure you are signed on as QSECOFR or with a profile that has *SECADM rights and is enrolled in the system directory.

ADDLIB RT1INSTALL

Follow the instructions in the section Install of the RouteOne automatic download routine, with the following options:

Select product version

Use option 3 to install PTFs only

Enter 0 into 'Download Product?

Enter 0 into download needed files?

Enter 1 into Install Product?

ShowMe

To install the product manually perform the following:-

Key the following on an iSeries command line:- (If you have previously download any Utilities 400 products you may get error messages saying that the library or file already exists. Just ignore these messages)

```
CRTLIB RT1INSTALL
```

```
CRTSAVF RT1INSTALL/SHOWMEDEMO
```

```
CRTSAVF RT1INSTALL/SM4BAS4
```

```
CRTSAVF RT1INSTALL/SM4BIF4
```

```
CRTSAVF RT1INSTALL/SM4RSI4
```

```
CRTSAVF RT1INSTALL/SM4WEB4
```

```
CRTSAVF RT1INSTALL/SHOWMEV4
```

```
CRTSAVF RT1INSTALL/SHOWMEPTF4
```

On a PC:-

Create a folder on your c:\ drive and call it UTIINSTALL

Open up the command prompt and enter FTP www.uti400.com

Enter user name utiguest when prompted

Enter password Guest400 when prompted

```
BIN
```

```
CD ShowMe/releases
```

```
DIR
```

This will show you a list of the available releases on the FTP site eg 4.4.3

Enter CD followed by the release you wish to download eg CD 4.4.3

```
LCD C:\UTIINSTALL
```

Utilities 400 Product download and installation guide

```
GET SHOWMEDEMO.SAV SHOWMEDEMO
```

```
GET SM4BAS4.SAV SM4BAS4
```

```
GET SM4BIF4.SAV SM4BIF4
```

```
GET SM4WEB4.SAV SM4WEB4
```

```
GET SM4RSI4.SAV SM4RSI4
```

```
GET SHOWMEPTF4.SAV SHOWMEPTF4
```

```
GET SHOWMEV4.SAV SHOWMEV4
```

```
QUIT
```

Now we will FTP these files to the save files we previously created on the iSeries. To do this in the PC command prompt enter the following

```
FTP nnn.nnn.nnn.nnn (Replace nnn.nnn.nnn.nnn with the IP address of your iSeries)
```

```
Log on with a valid iSeries user and password
```

```
BIN
```

```
LCD C:\UTIINSTALL
```

```
CD RT1INSTALL
```

```
PUT SHOWMEDEMO SHOWMEDEMO
```

```
PUT SM4BAS4 SM4BAS4
```

```
PUT SM4BIF4 SM4BIF4
```

```
PUT SM4WEB4 SM4WEB4
```

```
PUT SM4RSI4 SM4RSI4
```

```
PUT SHOWMEPTF4 SHOWMEPTF4
```

```
PUT SHOWMEV4 SHOWMEV4
```

```
QUIT
```

Back on the iSeries:

Ensure you are signed on as QSECOFR or with a profile that has *SECADM rights.

Utilities 400 Product download and installation guide

Enter ADDLIBLE RT1INSTALL (May say already in library list – this is OK)

To perform a new installation enter call #UTIINS06, to just install PTFs enter call UTIINS09.

Follow the instructions in the section Install of the ShowMe automatic download routine for installation options.

pciRoute

To install the product manually perform the following:-

Key the following on an iSeries command line:- (If you have previously download any Utilities 400 products you may get error messages saying that the library or file already exists. Just ignore these messages)

```
CRTLIB RT1INSTALL
```

```
CRTSAVF RT1INSTALL/IROUTEV1
```

```
CRTSAVF RT1INSTALL/IROUTEV1D
```

```
CRTSAVF RT1INSTALL/IRTPTFS
```

On a PC:-

Create a folder on your c:\ drive and call it UTIINSTALL

Open up the command prompt and enter FTP www.uti400.com

Enter user name utiguest when prompted

Enter password Guest400 when prompted

```
BIN
```

```
CD iroute/releases
```

```
DIR
```

This will show you a list of the available releases on the FTP site eg 4.20

Utilities 400 Product download and installation guide

Enter CD followed by the release you wish to download eg CD 4.20

```
LCD C:\UTIINSTALL
```

```
GET IROUTEV1.SAV IROUTEV1
```

```
GET IROUTEV1D.SAV IROUTEV1D
```

```
GET IRTPTFS.SAV IRTPTFS
```

```
QUIT
```

Now we will FTP these files to the save files we previously created on the iSeries. To do this in the PC command prompt enter the following

```
FTP nnn.nnn.nnn.nnn (Replace nnn.nnn.nnn.nnn with the IP address of your iSeries)
```

Log on with a valid iSeries user and password

```
BIN
```

```
LCD C:\UTIINSTALL
```

```
CD RT1INSTALL
```

```
PUT IROUTEV1 IROUTEV1
```

```
PUT IROUTEV1D IROUTEV1D
```

```
PUT IRTPTFS IRTPTFS
```

```
QUIT
```

Back on the iSeries:

Ensure you are signed on as QSECOFR or with a profile that has *SECADM rights.

```
ADDLIB RT1INSTALL
```

For a new install:-

```
CALL UTIINS16
```

For an upgrade

```
CALL UTIINS17
```

To use the product enter the command IROUTEDATA/IROUTE.

ProActive

To install the product manually perform the following:-

Key the following on an iSeries command line:- (If you have previously download any Utilities 400 products you may get error messages saying that the library or file already exists. Just ignore these messages)

```
CRTLIB RT1INSTALL
```

```
CRTSAVF RT1INSTALL/UTIEM
```

```
CRTSAVF RT1INSTALL/UTIEMPTFS
```

On a PC:-

Create a folder on your c:\ drive and call it UTIINSTALL

Open up the command prompt and enter FTP www.uti400.com

Enter user name utiguest when prompted

Enter password Guest400 when prompted

```
BIN
```

```
CD proactive/releases
```

```
DIR
```

This will show you a list of the available releases on the FTP site eg 1.11

Enter CD followed by the release you wish to download eg CD 1.11

```
LCD C:\UTIINSTALL
```

```
GET UTIEMV1.SAV UTIEM
```

```
GET UTIEMPTFS.SAV UTIEMPTFS
```

```
QUIT
```

Utilities 400 Product download and installation guide

Now we will FTP these files to the save files we previously created on the iSeries. To do this in the PC command prompt enter the following

FTP nnn.nnn.nnn.nnn (Replace nnn.nnn.nnn.nnn with the IP address of your iSeries)

Log on with a valid iSeries user and password

BIN

LCD C:\UTIINSTALL

CD RT1INSTALL

PUT UTIEM UTIEM

PUT UTIEMPTFS UTIEMPTFS

QUIT

Back on the iSeries:

Ensure you are signed on as QSECOFR or with a profile that has *SECADM rights.

ADDLIBLE RT1INSTALL

For a new installation:-

CALL UTIINS12

To upgrade an existing installation:-

CALL UTIINS13

To enter the product enter command UTIEM/UTIPA

Query Manager

To install the product manually perform the following:-

Key the following on an iSeries command line:- (If you have previously download any Utilities 400 products you may get error messages saying that the library or file already exists. Just ignore these messages)

Utilities 400 Product download and installation guide

```
CRTLIB RT1INSTALL
```

```
CRTSAVF RT1INSTALL/UTIQM
```

```
CRTSAVF RT1INSTALL/UTIQMPTFS
```

On a PC:-

Create a folder on your c:\ drive and call it UTIINSTALL

Open up the command prompt and enter FTP www.uti400.com

Enter user name utiguest when prompted

Enter password Guest400 when prompted

```
BIN
```

```
CD proactive/querymanager
```

```
DIR
```

This will show you a list of the available releases on the FTP site eg 2.00

Enter CD followed by the release you wish to download eg CD 2.00

```
LCD C:\UTIINSTALL
```

```
GET UTIQM.SAV UTIQM
```

```
GET UTIQMPTFS.SAV UTIQMPTFS
```

```
QUIT
```

Now we will FTP these files to the save files we previously created on the iSeries. To do this in the PC command prompt enter the following

```
FTP nnn.nnn.nnn.nnn (Replace nnn.nnn.nnn.nnn with the IP address of your iSeries)
```

Log on with a valid iSeries user and password

```
BIN
```

```
LCD C:\UTIINSTALL
```

```
CD RT1INSTALL
```

```
PUT UTIQM UTIQM
```

Utilities 400 Product download and installation guide

```
PUT UTIQMPTFS UTIQMPTFS
```

```
QUIT
```

Back on the iSeries:

Ensure you are signed on as QSECOFR or with a profile that has *SECADM rights.

```
ADDLIB RT1INSTALL
```

For a new installation:-

```
CALL UTIINS12
```

To upgrade an existing installation:-

```
CALL UTIINS13
```

To enter the product enter command UTIEM/UTIPA

Product installs on the PC

RouteOne Client Installation

FTP Requirements

RouteOne from the System i uses FTP or Secure FTP methodology to transfer the data to the nominated server, an FTP server program is therefore required on the server to receive the data.

It is recommended that the Microsoft FTP server program or a similar one is used.

As part of the RouteOne client installation a piece of freeware called ArGoSoft FTP server is automatically installed. Although this program works fine it is really only intended for use in a demonstration or testing environment due to being relatively inefficient when compared to other programs.

RouteOne client may be run as a service, separate instructions are available for this.

If RouteOne Client has been previously installed

Ensure the client program is not running. If running as a service, stop the service and then end the client process using task manager.

De-install the client through the normal add/remove programs options from the control panel.

If the PDF profile file (txt2pdf.ini in the windows directory) has been customised, a copy of this should be taken prior to installation and replaced on completion.

RouteOne Client Installation

From the FTP site (<ftp.uti400.com> - user is uti400 and password is Guest400) access the ClientReleases folder within the RouteOne folder and double click on the zip file that corresponds to the version of RouteOne that is installed on the iSeries. The file will be named Client (Version x.xx).zip where x.xx is the version number. Download this file to your local drive.

Take the option to extract all the files.

Double click the setup exe to start the installation.

1. During the installation process a series of windows will be displayed, in one of these the default path name indicating where the RouteOne software will be installed will be displayed. The path may be changed.
2. Continue the installation by clicking the next buttons.

On completion a successful installation message will be displayed.

To Launch the RouteOne Client Program

Click Start and the shortcut to Route1.exe. The RouteOne client program will appear in the systray. If you require the RouteOne client application to automatically start when you start windows, simply right click on the RouteOne client icon, select restore and from the menu bar select options and Load at Windows Start up.

Note: A folder named RouteOne will automatically be created with sub directories of Converted, Log, ToConvert, Unsuccessful and Processing on the drive where the RouteOne client was installed.

SysTray Watch Icon Colours

Black and white - idle
Green - processing
Red - timer is paused

To start the ArGoSoft FTP server program

If you using an alternate FTP program please skip this section.

1. Right click on the RouteOne Client icon (symbolised by a wristwatch), and select Restore.
2. In FTP Options select Start FTP Server. The program is now active.
3. If you wish the FTP Server program to start automatically when you or the system starts the RouteOne client program, simply choose Autostart FTP Server in FTP Options.

Defining valid users to the FTP server

To use the FTP server program you first need to set up at least one user.

Open the FTP server program by right clicking the FTP server program in the systray, then selecting show.

Select tools, then users and Add New User.

Enter the user name in the user name prompt box. Enter a password in both password and confirm password boxes. The user name and password are case sensitive and must match details entered in FTP user details on iSeries.

Utilities 400 Product download and installation guide

In the home directory box enter or browse to the RouteOne folder path (e.g C:\RouteOne). This should match the path displayed in the RouteOne Client path.

Tick Read, Write and List

The RouteOne client is now ready for use.

PC-iRoute Script Generator and File Converter Installation

File Converter is automatically installed as part of the Script Generator installation

PC Pre-Requisites

To utilise the full functionality of the product it is necessary to have the following installed on the host PC or Server:-

An E-Mail provider if using email facility e.g. Outlook

Microsoft Office (2000 or above)

If PC-iRoute Script Generator has been previously installed

Ensure the script generator and file converter programs are not running. If file converter is running as a service, stop the service and then end the file converter task using task manager.

Take a copy of the databases MailDetails.mdb and ScriptSchedule.mdb. These databases contain the configuration set up, scripts and the file converter processing options. If the default path for the databases has not been changed, these will be located in the PC-iRoute folder within the Program Files folder. To confirm the location of the database path, select the Admin option from within the Script generator and Change Database location, the current location will be displayed.

De-install script generator program through the normal add/remove programs options from the control panel.

After installation the above databases should be copied back to the relevant location.

Installation

Access the FTP site (<ftp.uti400.com> - user is uti400 and password is Guest400), if this does not open automatically in windows explorer, it is recommended you change the view to this.

From the FTP site access the PCReleases folder within the iRoute folder

Download the correct zip file to correspond to the iRoute version installed on the iSeries.

Extract all the files, on completion double click the setup.exe to start the installation.

During the installation process a series of windows will be displayed, in one of these the default path name indicating where the PC-iRoute software will be installed will be displayed. The path may be changed.

To Launch the PC-iRoute script generator program

Click Start, All Programs, and the shortcut to PC-iRoute script generator.exe. to display the main panel.

File Converter

To start the file converter program select options from the menu bar and start the file converter program.

File converter may run as a service, separate instructions are available for this.