

The Moderni capture library allows green screen applications to be run as normal, but the underlying 5250 data stream is written to a log file. This will allow the thorough testing of the Moderni screen parser with a report being produced of the results, which should look exactly like the application screens if everything is OK.

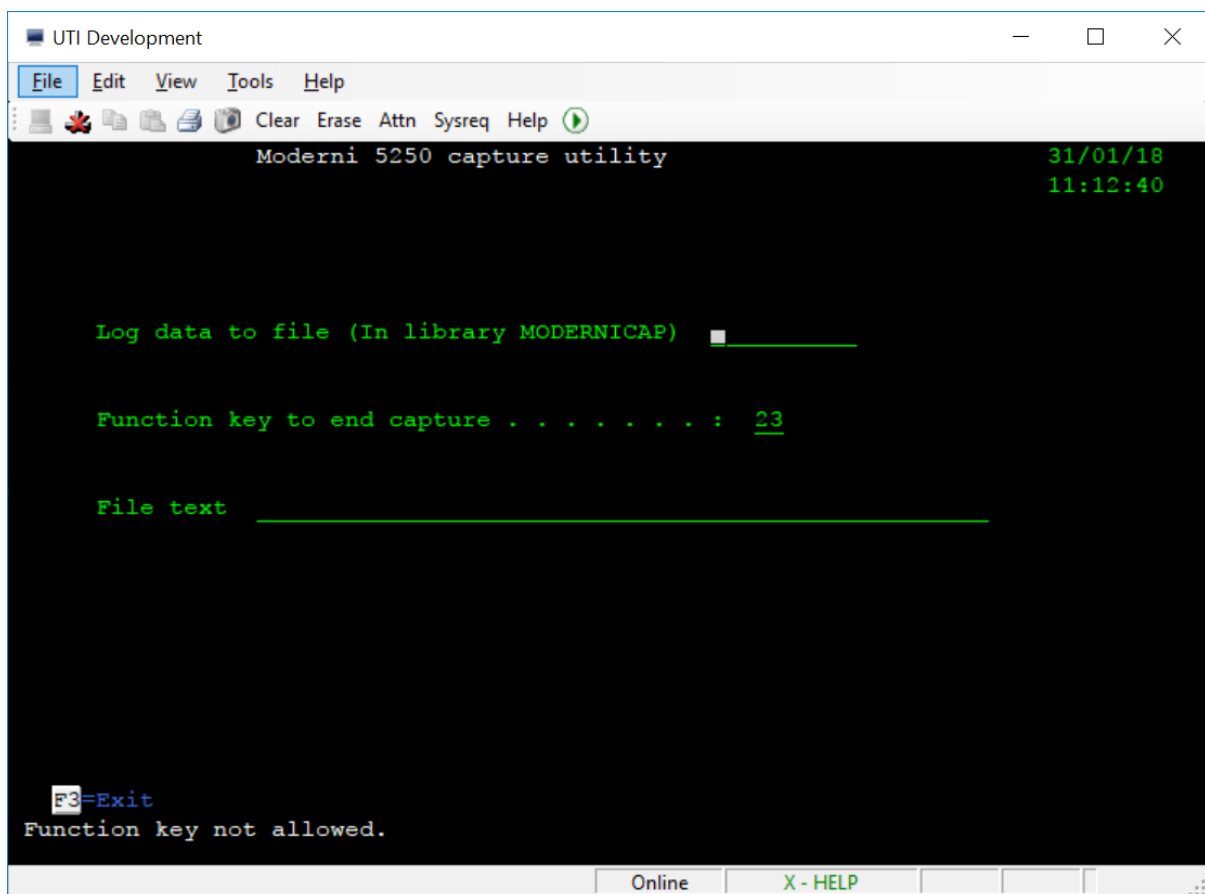
To install the routine on the iSeries it is necessary to restore library MODERNICAP from a save file provided by Utilities 400.

Then to run the application do these commands:-

```
ADDLIB MODERNICAP
```

```
CALL MODICAP01
```

This will result in a screen like this being displayed:-

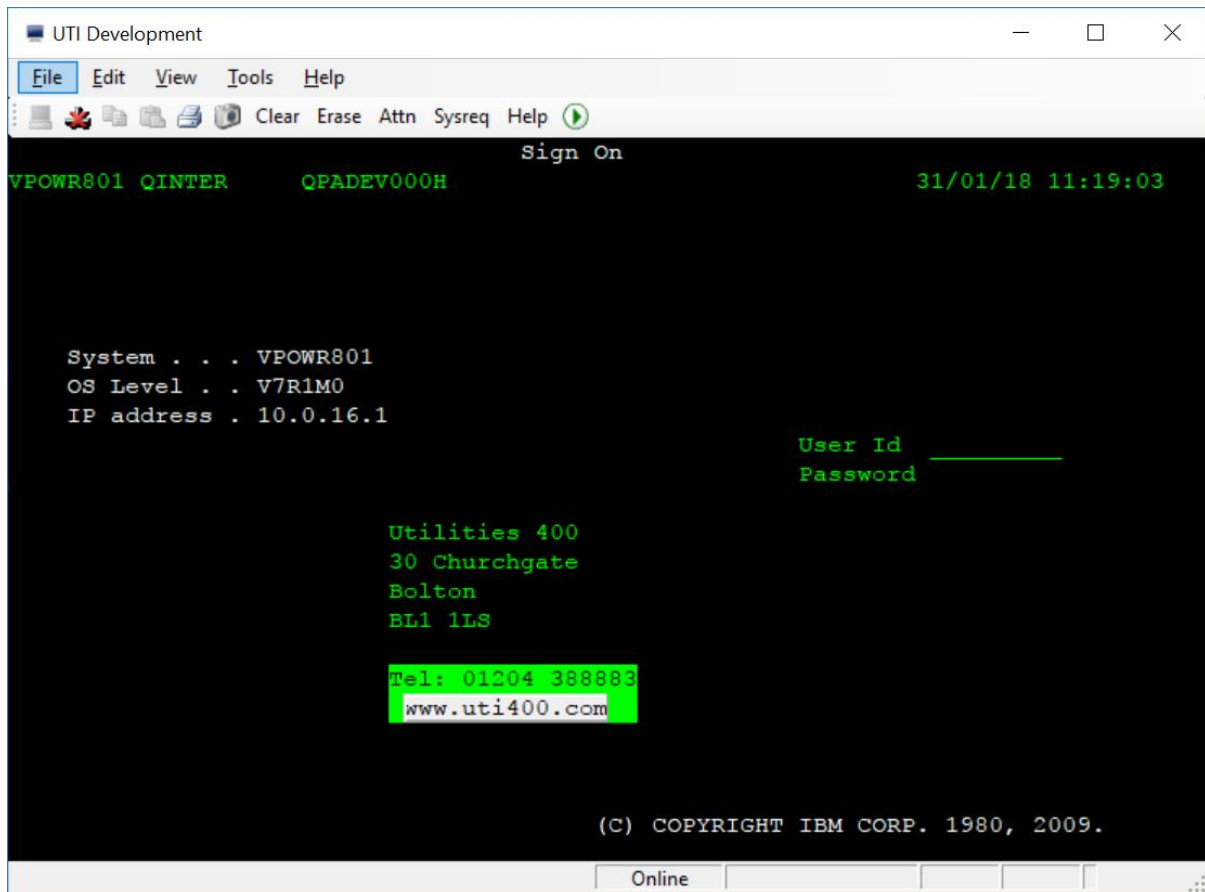


In the first file enter the name of the log file to create. This will always be created in library MODERNICAP. This file must not already exist.

The second field defines the function key that will be used to end the capture process. It defaults to 23 as this is a little used function key. Try to choose a function key number that is not used in the application otherwise the capture routine will end early!

In the file text box enter the description of the data to be held in the log file eg Stock enquiries.

When the details are complete press Enter. This will now present you with another sign on screen. **Be careful here because when you sign on to the capture application, your password will be written to the log file. You may wish to change your password before starting this routine.**



Note that whilst running the capture application, the screens will all be in monochrome ie no colours will be displayed. This is so that the user will hopefully be aware that they are in capture mode.

Your normal screens will then be displayed. Run the applications as necessary and when complete press the function key entered on the first screen (The default was F23). You will then be on the screen you were in before entering capture mode. Remember to change your password back if necessary.