

ShowMe+



B2B Portals, GUI Modernisation
and Application Development
for real-time browser-based bi-
directional IBM i transactions



“ ShowMe+ has allowed my business to present a shop door for my customers and provide business portals for my suppliers. We’re now using the same tool to create GUI from our legacy applications – exceptional! ”



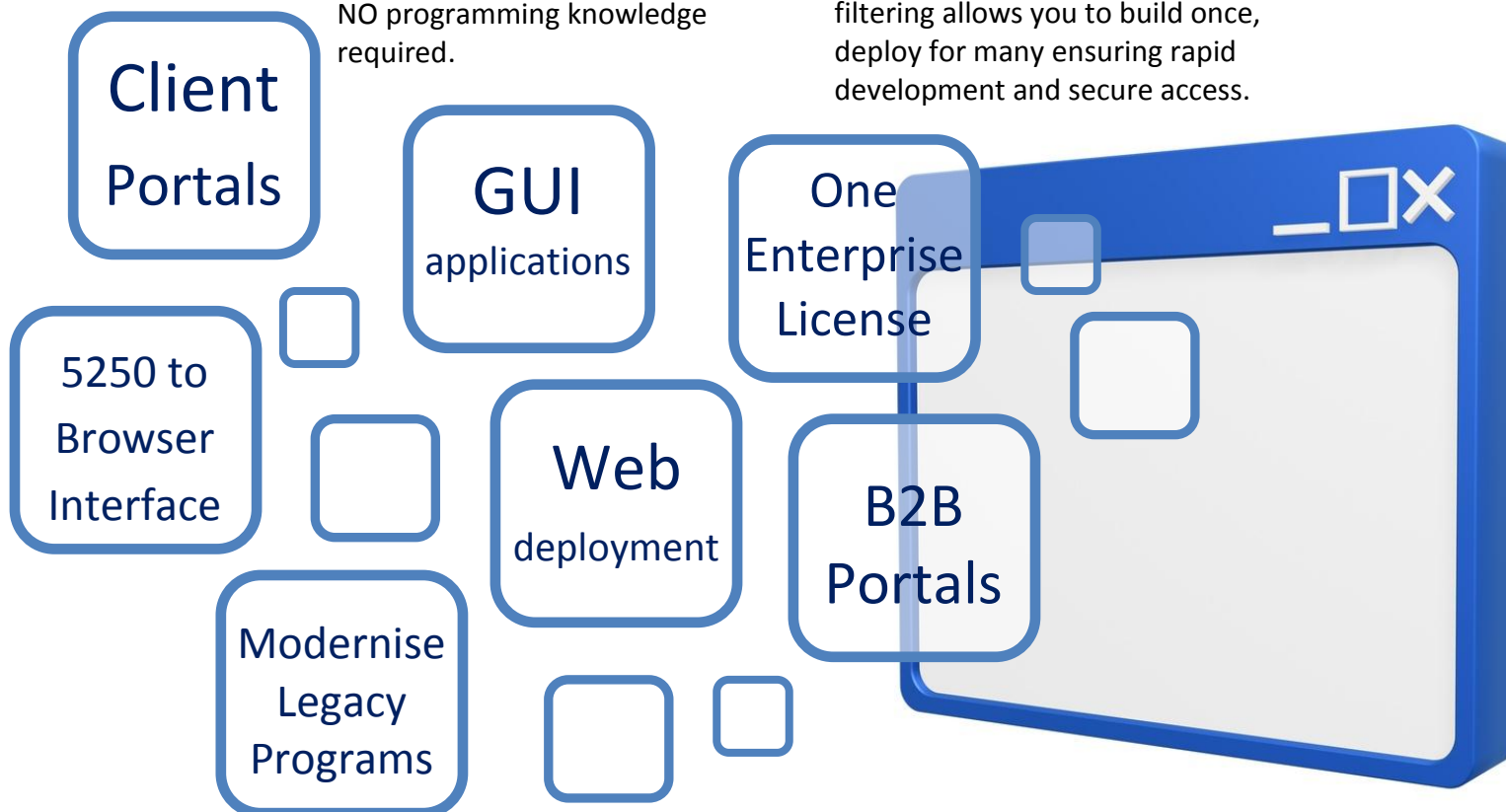
Simple Application Development

ShowMe+ enables bi-directional transactional processing to and from a web browser and your IBM i database(s).

- Deploy interactive business portals
- Create a web based store front for your business
- Design new GUI applications over your IBM i database(s)
- Drag and drop browser enabled design studio
- Quick to deploy - one template for multiple portals
- Modernise legacy applications with web based interface

ShowMe+ is an extension of our ShowMe Business Intelligence Solution. It allows for the creation of browser based GUI applications and portals for your IBM i enterprise – with absolutely NO programming knowledge required.

GUI and Portal Design is completely flexible. ShowMe+ includes a sophisticated, drag and drop, design studio. From here you can design your GUI or portal or use an existing template. Advanced filtering allows you to build once, deploy for many ensuring rapid development and secure access.





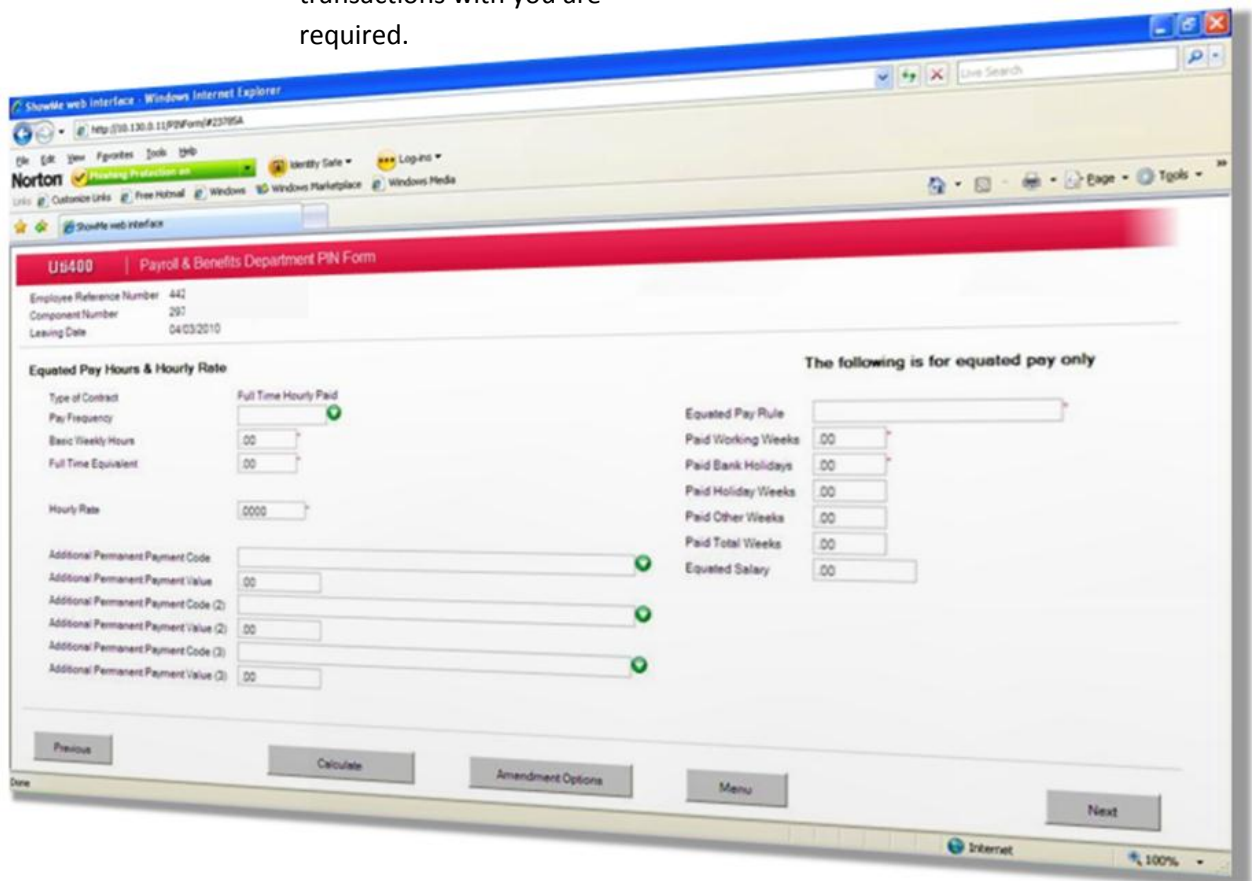
Create browser based GUI's, modernise applications, build business portals – quickly and without programming.

B2B Portals

ShowMe+ employs a powerful transactional engine that enables bi-directional transactional processing. In a nut shell, this allows you to add fields to your GUI that when submitted, will validate the data and update the database. Deploy this technology to create portals for your partners and suppliers. Data is secure but allows users to see information prevalent to them and make transactions with you are required.

No RPG

ShowMe+ provides an IBM i development platform for your IT department without the need to program RPG. Using simple business definitions with a drag and drop design studio, you can build GUI applications with ease.





A feature rich solution that adds value to your Business Intelligence investment

ShowMe+ Rich Feature List Includes:

- **Zero deployment required – nothing to install on destination device**

ShowMe+ uses browser technology to deploy your portal or graphic user interface. No need to install PC Client software, applets or ActiveX controls. Also, one enterprise license per server eliminates 'concurrent seat' costs.
- **No source code changes**

While ShowMe+ will allow for bi-direction transactional processing and building of own applications, there's no need to have access to, or change the source code.
- **Secure access and single sign on**

Use your one secure sign on for all your applications; ShowMe+ makes use of your Active Directory signatures
- **Eliminate maintenance and software support**

Build your own bespoke applications and remove the need to pay maintenance for software you no longer need
- **Modernise your 5250 applications with browser based GUI**

Translate and improve your 5250 'green screen' applications to a GUI in web browser. Add drop down menus, look up fields, graphics, graphs and more...
- **Create secure B2B Portals**

Create and deploy secure business portals for your clients, partners and suppliers to have access and act on information prevalent to them
- **Produce a C2B Store Front**

Does your business require an 'amazon' like shop front? ShowMe+ can provide the bi-directional transactional functionality required to build such an application
- **Create new applications over your DB2 database**

Have some bespoke work in mind? ShowMe+ can be the lynch-pin in creating new applications that interact with new, existing or multiple databases on the IBM i